

# Technical Specifications

## RAYSCAN ALPHA 3D EDGE

Type	Panoramic, Cephalometric, Cone Beam CT
Patient positioning	Standing or sitting (wheelchair accessible)
Focal spot	0.5mm
Tube voltage	60~90kVp
Tube current	4~17mA
Weight	RAYSCAN α - 3D EDGE (Pano+CT):148kg (326.28lb) RAYSCAN α - 3D EDGE (Pano+CT+Scan Ceph):164kg (361.56lb)

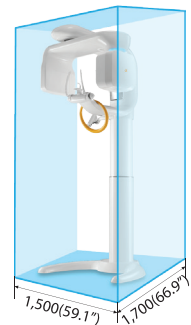
	CBCT	Panoramic	Cephalometric (Scan type)
Detector type	CMOS FPD	CMOS detector	CdTe detector
F.O.V	8x8cm, 8x5cm	-	20x24cm, 22x24cm, 26x24cm
Voxel size (CT)	0.143~0.286mm <sup>3</sup>	-	-
Scan time	14sec	Max. 14sec	Min. 4.0sec

# Dimensions (Unit: mm / inch)

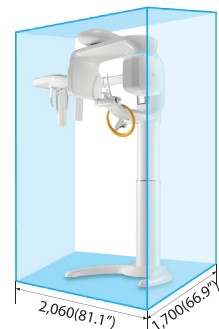
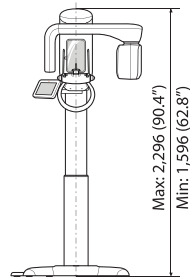
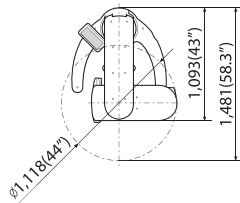
Suggested Operating Space

Top View

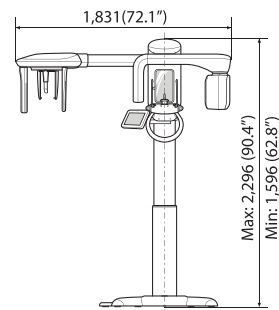
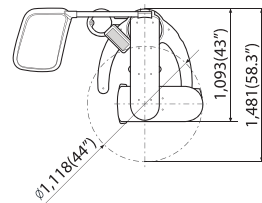
Front View



RAYSCAN α - 3D EDGE (Pano + CT)



RAYSCAN α - 3D EDGE (Pano + CT + Scan Ceph)



# RAYSCAN

Cone Beam CT with Digital Panoramic X-Ray

## 3D EDGE

CBCT+PANO+CEPH for all.

# RAYSCAN 3D EDGE

SPECIALIZED MULTI FOV. ENDODONTIC PROCEDURES.

**RAY AMERICA INC.**  
**New Jersey** 725 River Road, Suite 118  
 Edgewater, NJ 07020, USA  
**Georgia** 11555 Medlock Bridge Road, Suite 100  
 Johns Creek, GA 30097, USA  
**Phone** 1.800.976.4586  
**Email** info@rayamerica.com  
 www.rayamerica.com

**Ray America**

© 2018 Ray America Inc. All Rights Reserved.



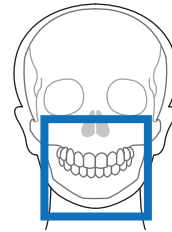


## Multi FOV

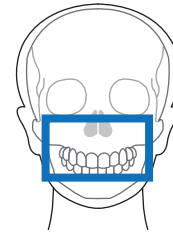
8x8

8x5

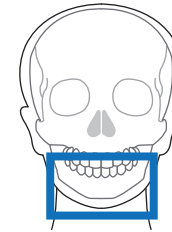
8x5



Full Arch



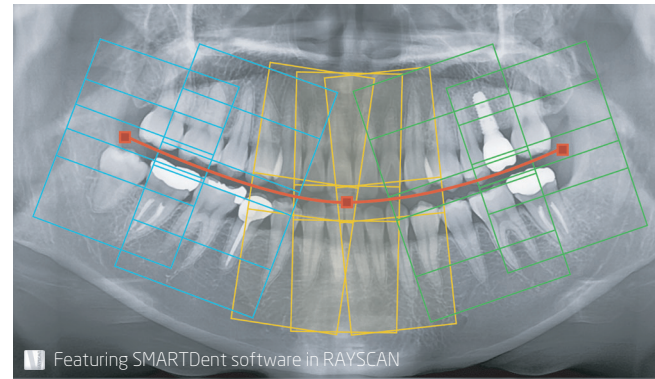
Maxilla



Mandible

## All You Need Is One Pano

WITH ONE PANORAMIC IMAGE, YOU ACHIEVE A FULL MOUTH SERIES.

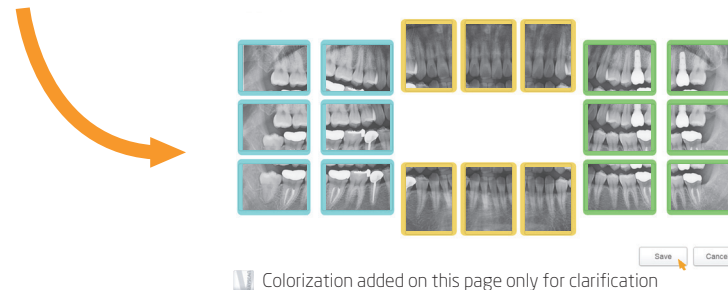


## Intuitive Operation

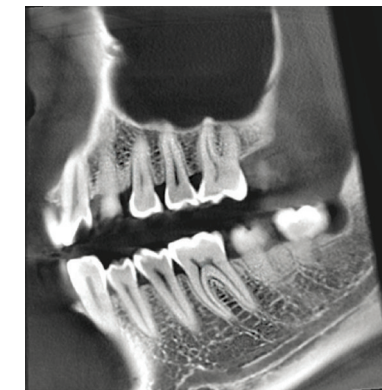
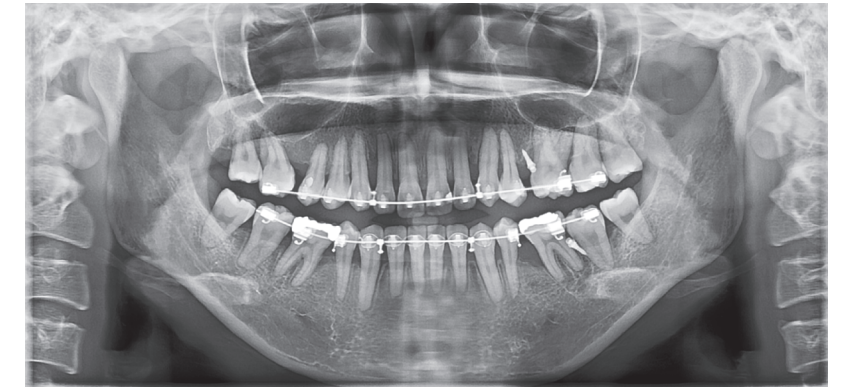
- Wireless remote control.
- Attached touchscreen monitor.
- User-friendly graphic user interface.

## Optimized Workflow

- 32 seconds of CT reconstruction after scanning.
- 3D imaging software with an implant library of various companies.
- STL converter for Object Scan (impression, model, and etc).



## Advanced Quality



MAR (Metal Artifact Reduction)

OFF

ON

