

S I M P L E  
E A S Y  
B E T T E R

**Luna** 

# Tapered-Straight-Tapered Design

## Tapered Section -

Provides firm fixation in Crestal bone

## Straight Section -

Provides stability and control of implant depth

## Tapered Section -

When matched with the drill, allows for easy depth control and additional stability.  
Through changes in the drill design, initial fixation is easily obtained even in thin Crestal bone

## S&E Surface

Sand blasted & acid Etched

Average roughness above 2,5um

Bone healing period reduced by 20%

Cell response increased by over 20%

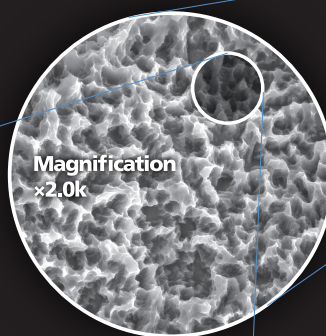
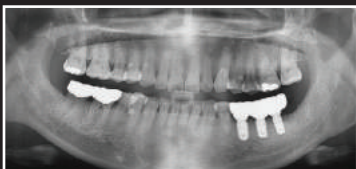
Excellent initial fixation even in soft bone

30 step cleansing and washing process guarantees a clean surface

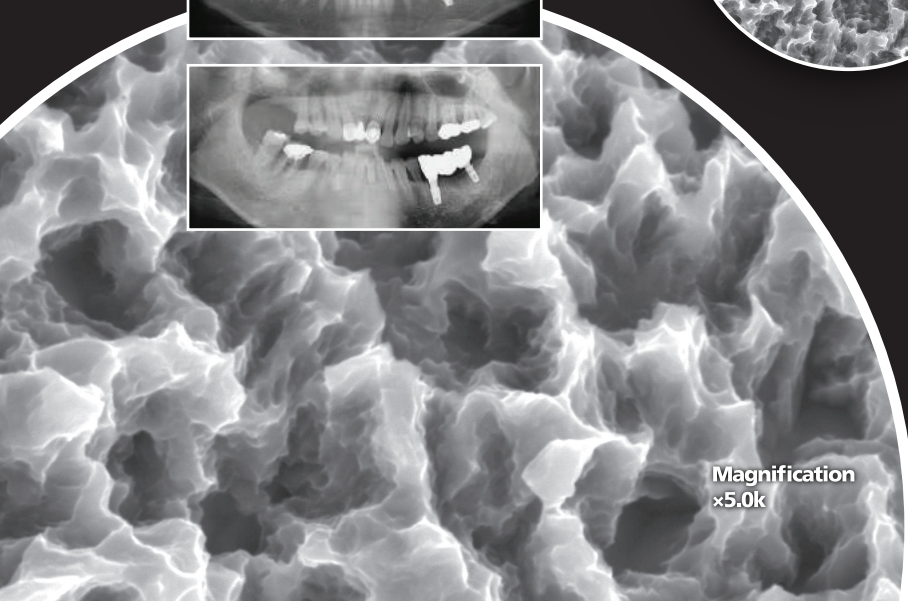
Five step safety test ensures an unadulterated surface.

## Luna S

### Clinical Examples



Magnification  
×2.0k

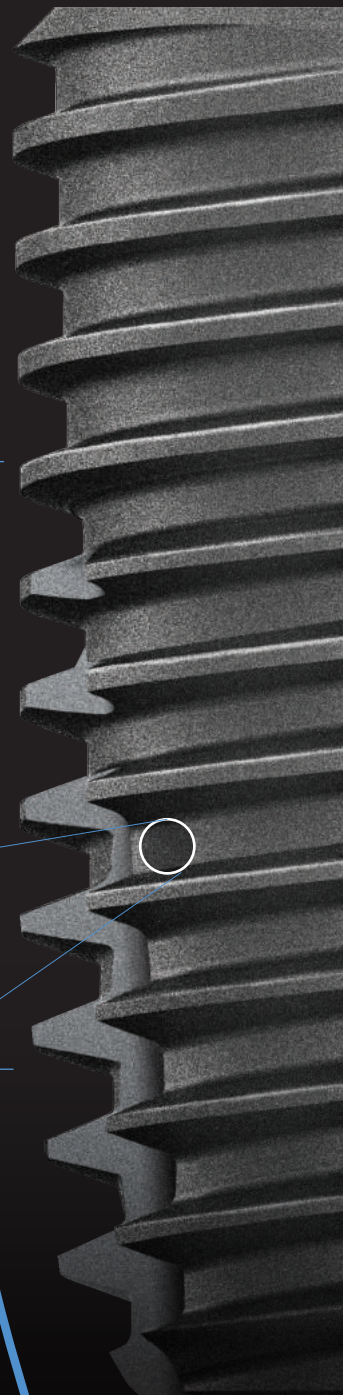


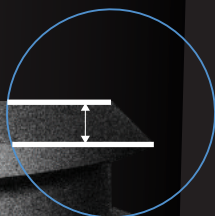
Magnification  
×5.0k

Tapered

Straight

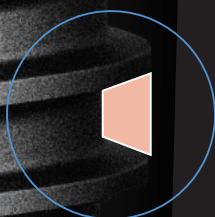
Tapered





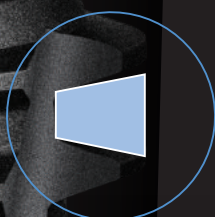
## 1<sup>st</sup> Thread

First thread designed to minimize bone absorption



## Cortical Bone

Thread thickness is increased, improving initial fixation and preventing the need of excessive torque during implantation



## Trabecular Bone

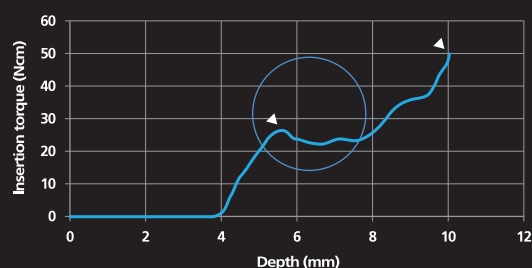
The straight section and lower taper section have a larger bone chip pocket space to increase the clamping force even in cancellous bone

## Insertion Torque Test

As initial insertion torque values rise, initial stability increases and when combined with the stability of the S&E surface, loading time is decreased

By tuning the torque characteristics over the entire implant, differences in torque values are minimized

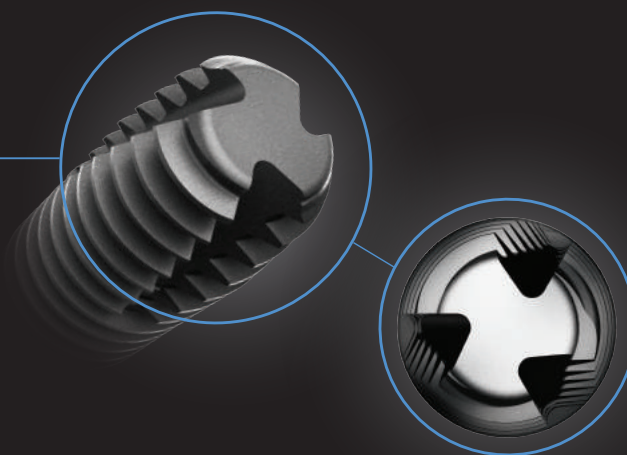
Stability & Stimulation for torque distribution of implant



## Self Tapping Edge

Through the straight cutting edge design, self tapping and path modification are possible

In the 7mm implant, self cutting is minimized through an increase in surface area, increasing stability



# Abutment Level



Burnout Cylinder



Healing Cap



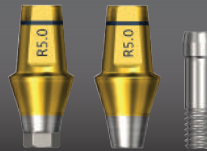
Impression Coping Cap



Abutment Analog



Simple Abutment



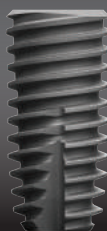
Duo Abutment



Cover Screw



Healing Abutment



Fixture



S I M P L E  
E A S Y  
B E T T E R

Luna **S**

## Fixture Level



Duo Abutment



Contour Abutment



Angled Abutment



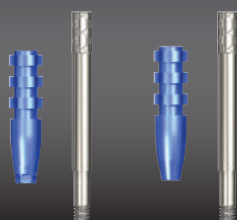
Goldcast Abutment



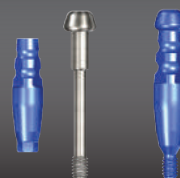
Temporary Abutment



Analog



Impression Coping Pick-up



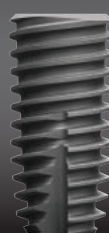
Impression Coping Transfer



Cover Screw



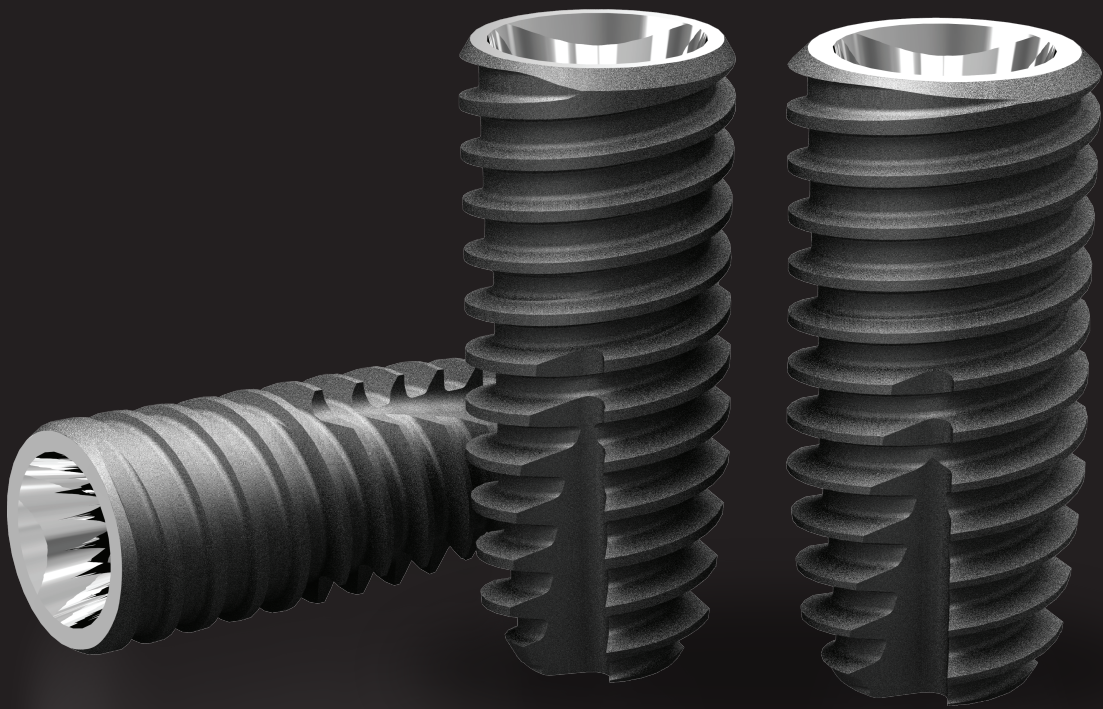
Healing Abutment








Fixture

S I M P L E  
E A S Y  
B E T T E R

**Luna** 



# Fixture

		 Diameter <b>3.5</b>	 Diameter <b>4.0</b>	 Diameter <b>4.5</b>	 Diameter <b>5.0</b>	 Diameter <b>6.0</b>
Length(mm)						
7	S&E Mount		NSIR4007S	NSIR4507S	NSIR5007S	SIR6007S
	S&E No Mount		NSIR4007SF	NSIR4507SF	NSIR5007SF	SIR6007SF
8.5	S&E Mount	NSIN3508S	NSIR4008S	NSIR4508S	NSIR5008S	SIR6008S
	S&E No Mount	NSIN3508SF	NSIR4008SF	NSIR4508SF	NSIR5008SF	SIR6008SF
10	S&E Mount	NSIN3510S	NSIR4010S	NSIR4510S	NSIR5010S	SIR6010S
	S&E No Mount	NSIN3510SF	NSIR4010SF	NSIR4510SF	NSIR5010SF	SIR6010SF
11.5	S&E Mount	NSIN3511S	NSIR4011S	NSIR4511S	NSIR5011S	SIR6011S
	S&E No Mount	NSIN3511SF	NSIR4011SF	NSIR4511SF	NSIR5011SF	SIR6011SF
13	S&E Mount	NSIN3513S	NSIR4013S	NSIR4513S	NSIR5013S	SIR6013S
	S&E No Mount	NSIN3513SF	NSIR4013SF	NSIR4513SF	NSIR5013SF	SIR6013SF
15	S&E Mount	NSIN3515S	NSIR4015S	NSIR4515S	NSIR5015S	
	S&E No Mount	NSIN3515SF	NSIR4015SF	NSIR4515SF	NSIR5015SF	

## Mount



**NP**  
SMAN00



**RP**  
SMAR00

## Cover Screw

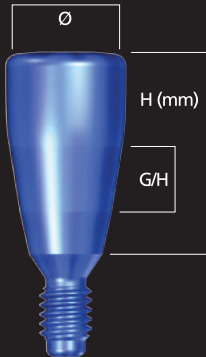


**NP**  
SCSN00



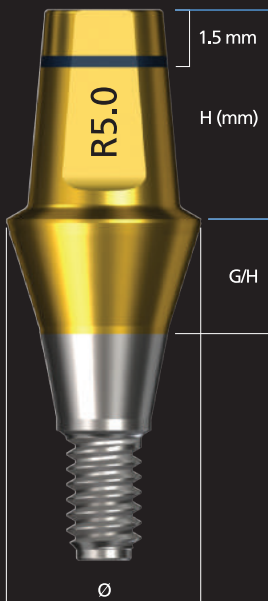
**RP**  
SCSR00

# Healing Abutment



H	G/H	NP		RP			
		Ø4.0	Ø4.5	Ø4.0	Ø4.5	Ø5.0	Ø6.0
2	1	SHAN4020	SHAN4520	SHAR4020	SHAR4520	SHAR5020	SHAR6020
3.5	2	SHAN4035	SHAN4535	SHAR4035	SHAR4535	SHAR5035	SHAR6035
5	3	SHAN4050	SHAN4550	SHAR4050	SHAR4550	SHAR5050	SHAR6050
7	4	SHAN4070	SHAN4570	SHAR4070	SHAR4570	SHAR5070	SHAR6070

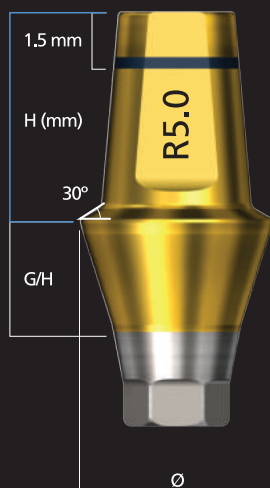
# Simple Abutment



	G/H	NP		RP			
		Ø4.0	Ø4.5	Ø4.0	Ø4.5	Ø5.0	Ø6.0
H4.0	1	SSPAN4041	SSPAN4541	SSPAR4041	SSPAR4541	SSPAR5041	SSPAR6041
	2	SSPAN4042	SSPAN4542	SSPAR4042	SSPAR4542	SSPAR5042	SSPAR6042
	3	SSPAN4043	SSPAN4543	SSPAR4043	SSPAR4543	SSPAR5043	SSPAR6043
	4	SSPAN4044	SSPAN4544	SSPAR4044	SSPAR4544	SSPAR5044	SSPAR6044
	5					SSPAR5045	SSPAR6045
H5.5	1	SSPAN4051	SSPAN4551	SSPAR4051	SSPAR4551	SSPAR5051	SSPAR6051
	2	SSPAN4052	SSPAN4552	SSPAR4052	SSPAR4552	SSPAR5052	SSPAR6052
	3	SSPAN4053	SSPAN4553	SSPAR4053	SSPAR4553	SSPAR5053	SSPAR6053
	4	SSPAN4054	SSPAN4554	SSPAR4054	SSPAR4554	SSPAR5054	SSPAR6054
	5					SSPAR5055	SSPAR6055
H7.0	1	SSPAN4071	SSPAN4571	SSPAR4071	SSPAR4571	SSPAR5071	SSPAR6071
	2	SSPAN4072	SSPAN4572	SSPAR4072	SSPAR4572	SSPAR5072	SSPAR6072
	3	SSPAN4073	SSPAN4573	SSPAR4073	SSPAR4573	SSPAR5073	SSPAR6073
	4	SSPAN4074	SSPAN4574	SSPAR4074	SSPAR4574	SSPAR5074	SSPAR6074
	5					SSPAR5075	SSPAR6075

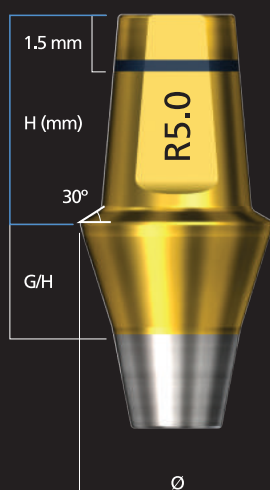
# Duo Abutment

## Hex



	G/H	NP		RP		
		Ø4.5	Ø5.0	Ø4.5	Ø5.0	Ø6.0
H4.0	1			SDAR5041H	SDAR6041H	
	2			SDAR5042H	SDAR6042H	
	3			SDAR5043H	SDAR6043H	
	4			SDAR5044H	SDAR6044H	
	5			SDAR5045H	SDAR6045H	
H5.5	1	SDAN4551H	SDAN5051H	SDAR4551H	SDAR5051H	SDAR6051H
	2	SDAN4552H	SDAN5052H	SDAR4552H	SDAR5052H	SDAR6052H
	3	SDAN4553H	SDAN5053H	SDAR4553H	SDAR5053H	SDAR6053H
	4	SDAN4554H	SDAN5054H	SDAR4554H	SDAR5054H	SDAR6054H
	5			SDAR4555H	SDAR5055H	SDAR6055H
H7.0	1			SDAR5071H	SDAR6071H	
	2			SDAR5072H	SDAR6072H	
	3			SDAR5073H	SDAR6073H	
	4			SDAR5074H	SDAR6074H	
	5			SDAR5075H	SDAR6075H	

## Non-Hex



	G/H	NP		RP		
		Ø4.5	Ø5.0	Ø4.5	Ø5.0	Ø6.0
H4.0	1			SDAR5041	SDAR6041	
	2			SDAR5042	SDAR6042	
	3			SDAR5043	SDAR6043	
	4			SDAR5044	SDAR6044	
	5			SDAR5045	SDAR6045	
H5.5	1	SDAN4551	SDAN5051	SDAR4551	SDAR5051	SDAR6051
	2	SDAN4552	SDAN5052	SDAR4552	SDAR5052	SDAR6052
	3	SDAN4553	SDAN5053	SDAR4553	SDAR5053	SDAR6053
	4	SDAN4554	SDAN5054	SDAR4554	SDAR5054	SDAR6054
	5			SDAR4555	SDAR5055	SDAR6055
H7.0	1			SDAR5071	SDAR6071	
	2			SDAR5072	SDAR6072	
	3			SDAR5073	SDAR6073	
	4			SDAR5074	SDAR6074	
	5			SDAR5075	SDAR6075	

### Abutment Screw

\* TiN 특수 코팅 처리-별매



NP  
SASN



RP  
SASR



NP  
SASNC

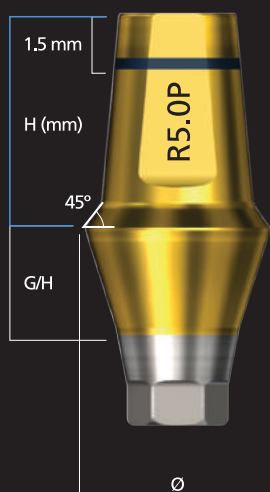


RP  
SASRC



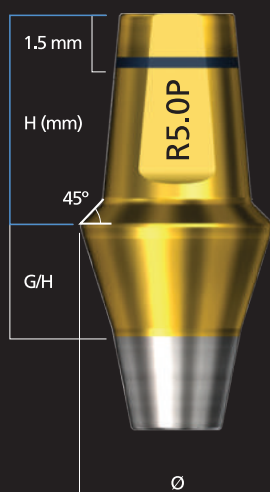
# Duo Plus Abutment

## Hex



	G/H	NP		RP		
		Ø4.5	Ø5.0	Ø4.5	Ø5.0	Ø6.0
H4.0	1			SIDAR5041H	SIDAR6041H	
	2			SIDAR5042H	SIDAR6042H	
	3			SIDAR5043H	SIDAR6043H	
	4			SIDAR5044H	SIDAR6044H	
	5			SIDAR5045H	SIDAR6045H	
H5.5	1	SIDAN4551H	SIDAN5051H	SIDAR4551H	SIDAR5051H	SIDAR6051H
	2	SIDAN4552H	SIDAN5052H	SIDAR4552H	SIDAR5052H	SIDAR6052H
	3	SIDAN4553H	SIDAN5053H	SIDAR4553H	SIDAR5053H	SIDAR6053H
	4	SIDAN4554H	SIDAN5054H	SIDAR4554H	SIDAR5054H	SIDAR6054H
	5			SIDAR4555H	SIDAR5055H	SIDAR6055H
H7.0	1			SIDAR5071H	SIDAR6071H	
	2			SIDAR5072H	SIDAR6072H	
	3			SIDAR5073H	SIDAR6073H	
	4			SIDAR5074H	SIDAR6074H	
	5			SIDAR5075H	SIDAR6075H	

## Non-Hex



	G/H	NP		RP		
		Ø4.5	Ø5.0	Ø4.5	Ø5.0	Ø6.0
H4.0	1			SIDAR5041	SIDAR6041	
	2			SIDAR5042	SIDAR6042	
	3			SIDAR5043	SIDAR6043	
	4			SIDAR5044	SIDAR6044	
	5			SIDAR5045	SIDAR6045	
H5.5	1	SIDAN4551	SIDAN5051	SIDAR4551	SIDAR5051	SIDAR6051
	2	SIDAN4552	SIDAN5052	SIDAR4552	SIDAR5052	SIDAR6052
	3	SIDAN4553	SIDAN5053	SIDAR4553	SIDAR5053	SIDAR6053
	4	SIDAN4554	SIDAN5054	SIDAR4554	SIDAR5054	SIDAR6054
	5			SIDAR4555	SIDAR5055	SIDAR6055
H7.0	1			SIDAR5071	SIDAR6071	
	2			SIDAR5072	SIDAR6072	
	3			SIDAR5073	SIDAR6073	
	4			SIDAR5074	SIDAR6074	
	5			SIDAR5075	SIDAR6075	

### Abutment Screw

\* TiN coated screw available separately



NP  
SASN



RP  
SASR

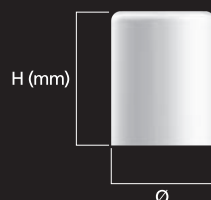


NP  
SASNC



RP  
SASRC

## Healing Cap



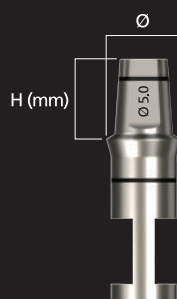
	Ø4.0	Ø4.5	Ø5.0	Ø6.0
H4.0	SSAPC4040	SSAPC4540	SSAPC5040	SSAPC6040
H5.5	SSAPC4055	SSAPC4555	SSAPC5055	SSAPC6055
H7.0	SSAPC4070	SSAPC4570	SSAPC5070	SSAPC6070

## Impression Coping Cap



	Ø4.0	Ø4.5	Ø5.0	Ø6.0
H5.5	SSPICC4055	SSPICC4555	SSPICC5055	SSPICC6055

## Abutment Analog



	Ø4.0	Ø4.5	Ø5.0	Ø6.0
H4.0	SSPAA4040	SSPAA4540	SSPAA5040	SSPAA6040
H5.5	SSPAA4055	SSPAA4555	SSPAA5055	SSPAA6055
H7.0	SSPAA4070	SSPAA4570	SSPAA5070	SSPAA6070

## Burnout Cylinder



### Single

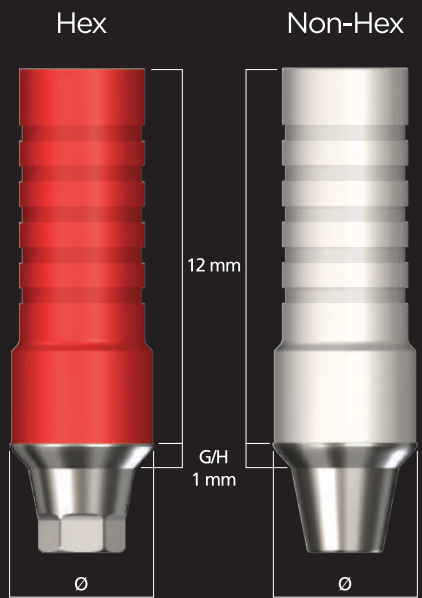
	Ø4.0	Ø4.5	Ø5.0	Ø6.0
	SSPBC40S	SSPBC45S	SSPBC50S	SSPBC60S



### Bridge

	Ø4.0	Ø4.5	Ø5.0	Ø6.0
	SSPBC40B	SSPBC45B	SSPBC50B	SSPBC60B

# Goldcast Abutment

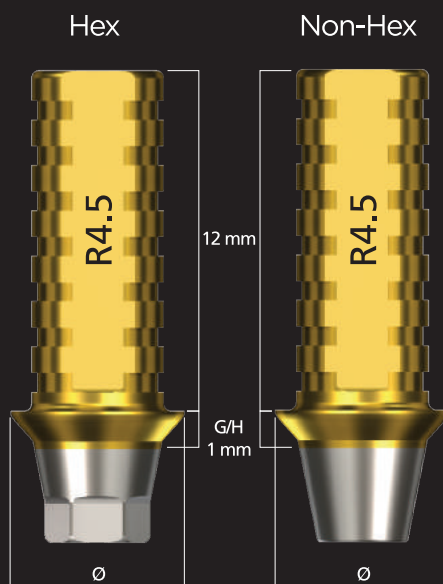


	NP	RP
Hex	Ø4.0 SGCAN4010H	Ø4.5 SGCAR4510H
Non-Hex	Ø4.0 SGCAN4010	Ø4.5 SGCAR4510

Abutment Screw



# Temporary Abutment



	NP	RP
Hex	Ø4.0 STAN4010H	Ø4.5 STAR4510H
Non-Hex	Ø4.0 STAN4010	Ø4.5 STAR4510

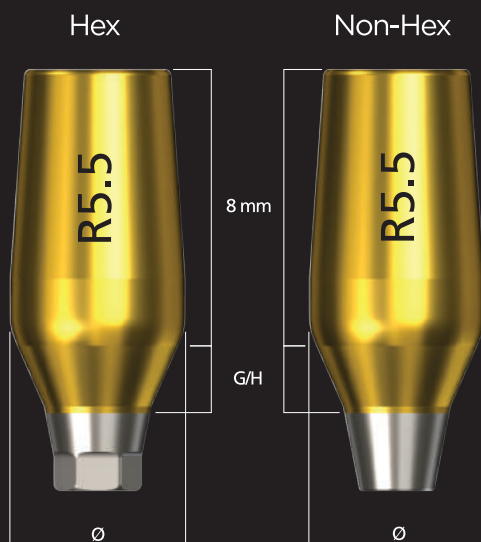
Abutment Screw



SIMPLE  
EASY  
BETTER

Luna 

## Contour Abutment

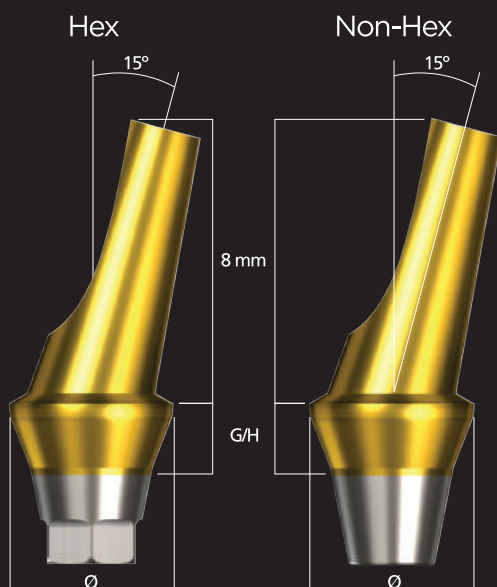


Hex	G/H	NP	RP	
		Ø4.0	Ø4.0	Ø5.5
	1.5mm	SICAN4015H	SICAR4015H	SICAR5515H
	3mm	SICAN4030H	SICAR4030H	SICAR5530H
Non-Hex	G/H	Ø4.0	Ø4.0	Ø5.5
	1.5mm	SICAN4015	SICAR4015	SICAR5515
	3mm	SICAN4030	SICAR4030	SICAR5530

Abutment Screw



## Angled Abutment



Hex	G/H	NP	RP	
		Ø4.5	Ø4.5	Ø5.5
	2mm	SAA4515N20H	SAA4515R20H	SAA5515R20H
	4mm	SAA4515N40H	SAA4515R40H	SAA5515R40H
Non-Hex	G/H	Ø4.5	Ø4.5	Ø5.5
	2mm	SAA4515N20	SAA4515R20	SAA5515R20
	4mm	SAA4515N40	SAA4515R40	SAA5515R40

Abutment Screw



## Impression Coping Pick-up



	NP	RP			
Hex	Ø4.0	Ø4.0	Ø5.0	Ø6.0	
Short	SFPUN40HS	SFPUR40HS	SFPUR50HS	SFPUR60HS	
Long	SFPUN40HL	SFPUR40HL	SFPUR50HL	SFPUR60HL	
Non-Hex	Ø4.0	Ø4.0	Ø5.0	Ø6.0	
	Short	SFPUN40S	SFPUR40S	SFPUR50S	SFPUR60S
	Long	SFPUN40L	SFPUR40L	SFPUR50L	SFPUR60L

Guide Pin	NP Short SPUSN00S	NP Long SPUSN00L	RP Short SPUSR00S	RP Long SPUSR00L
-----------	----------------------	---------------------	----------------------	---------------------

## Impression Coping Transfer

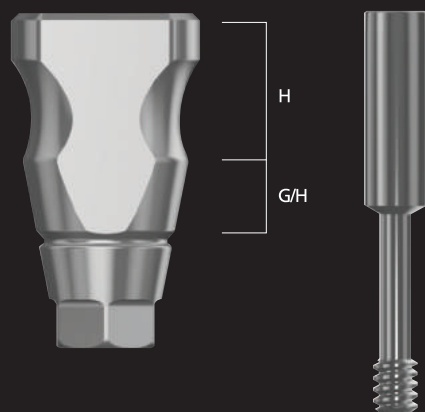


	NP	RP			
Hex	Ø4.0	Ø4.0	Ø5.0	Ø6.0	
Short	SFTN40HS	SFTR40HS	SFTR50HS	SFTR60HS	
Long	SFTN40HL	SFTR40HL	SFTR50HL	SFTR60HL	
Non-Hex	Ø4.0	Ø4.0	Ø5.0	Ø6.0	
	Short	SFTN40S	SFTR40S	SFTR50S	SFTR60S
	Long	SFTN40L	SFTR40L	SFTR50L	SFTR60L

Guide Pin	NP Short SFTSN00S	NP Long SFTSN00L	RP Short SFTSR00S	RP Long SFTSR00L
-----------	----------------------	---------------------	----------------------	---------------------

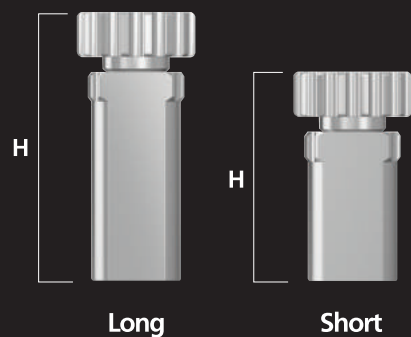


## Bite Impression Coping



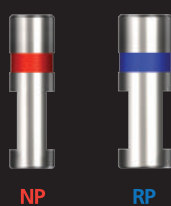
G/H (mm)	H (mm)	NP	RP	
2	4	SBCN5042H	SBCR5042H	
3	4	SBCN5043H	SBCR5043H	
4	4	SBCN5044H	SBCR5044H	
4	6	SBCN5064H	SBCR5064H	
6	6	SBCN5066H	SBCR5066H	

## Bite Impression Coping Driver



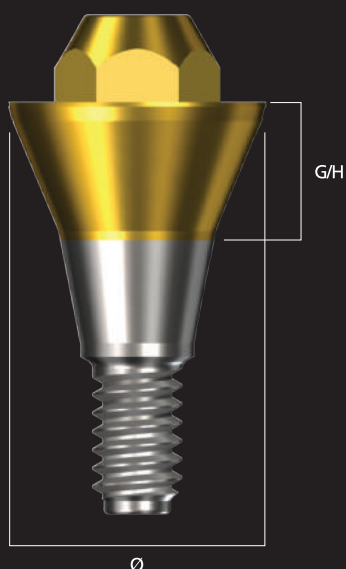
H (mm)	
14	BCD14
18	BCD18

## Analog



NP	RP
SFAN35	SFAR40

# Screw Abutment



	NP	RP	
G/H	Ø4.5	Ø4.5	Ø5.5
1	SSA45N10	SSA45R10	SSA55R10
2	SSA45N20	SSA45R20	SSA55R20
3	SSA45N30	SSA45R30	SSA55R30
4	SSA45N40	SSA45R40	SSA55R40
5			SSA55R50

## Healing Cap



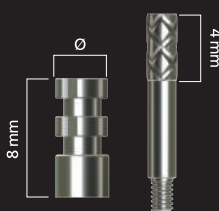
Ø4.5

Ø5.5

SAPC45A

SAPC55A

## Impression Coping Pick-up



Hex

Ø4.5

Ø5.5

Single

SAPU45H

SAPU55H

Non-Hex

Ø4.5

Ø5.5

Bridge

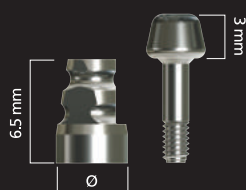
SAPU45

SAPU55

Guide Pin 포함

SAPUS18

## Impression Coping Transfer



Hex

Ø4.5

Ø5.5

Single

SAT45H

SAT55H

Non-Hex

Ø4.5

Ø5.5

Bridge

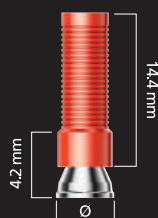
SAT45

SAT55

Guide Pin 포함

SATS18

## Gold Cylinder



Hex

Ø4.5

Ø5.5

Single

SGC45SA

SGC55SA

Non-Hex

Ø4.5

Ø5.5

Bridge

SGC45BA

SGC55BA

## Screw Abutment Analog



Ø4.5

Ø5.5

SAA45

SAA55

## Titanium Cylinder



Hex

Ø4.5

Ø5.5

Single

STC45S

STC55S

Non-Hex

Ø4.5

Ø5.5

Bridge

STC45B

STC55B

## Polishing Protector



Hex

Ø4.5

Ø5.5

Single

SPP45H

SPP55H

Non-Hex

Ø4.5

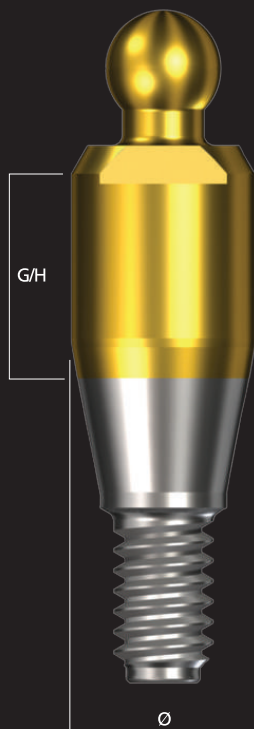
Ø5.5

Bridge

SPP45

SPP55

# Ball Abutment



## Ball Abutment Analog



BAA45

## Impression Cap



BAT00

	NP	RP
G/H	Ø3.5	Ø3.5
1	SBA35N10	SBA35R10
2	SBA35N20	SBA35R20
3	SBA35N30	SBA35R30
4	SBA35N40	SBA35R40
5	SBA35N50	SBA35R50
6	SBA35N60	SBA35R60

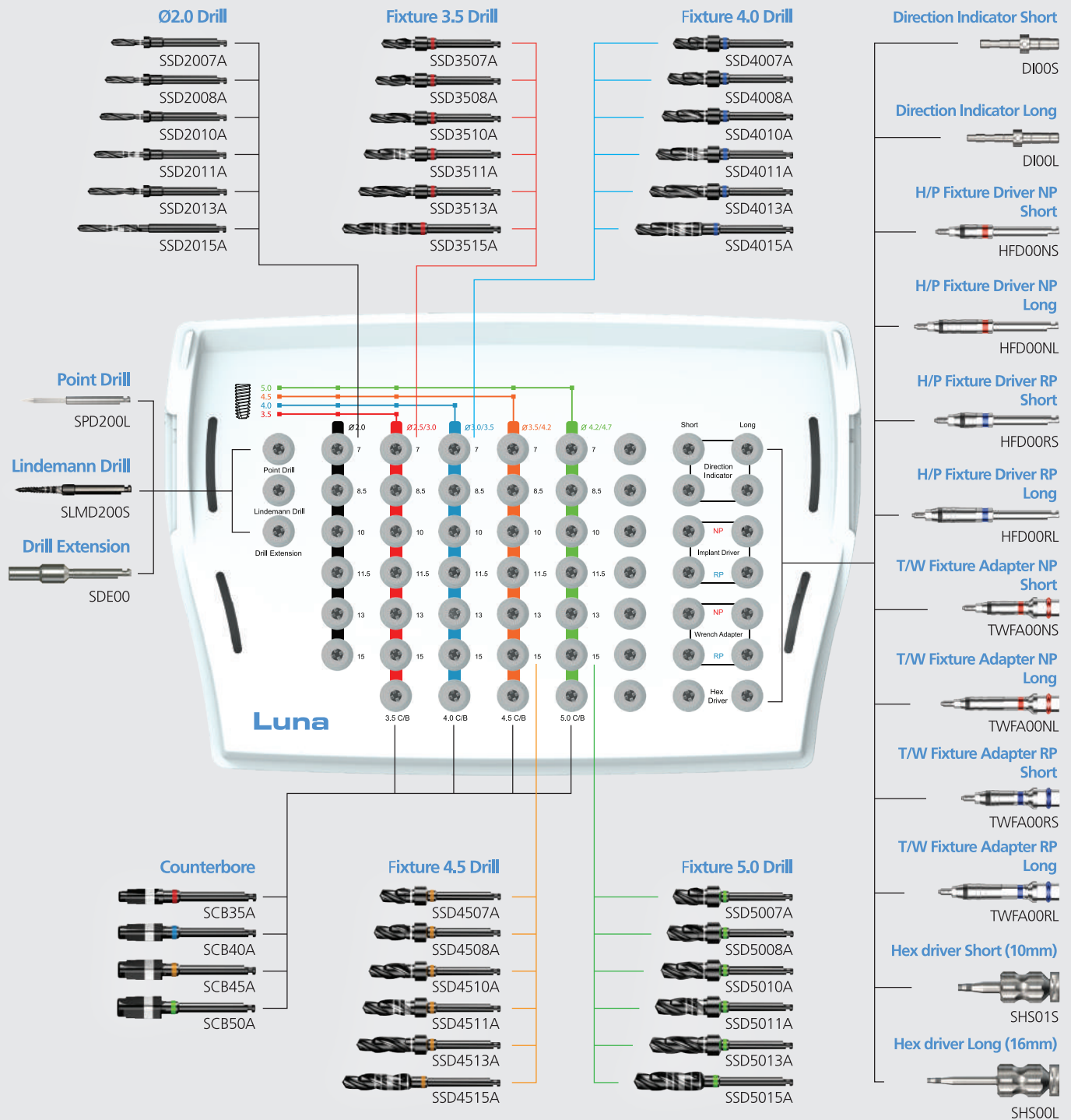
## Ball Abutment Socket



BAS00A

# Luna Surgical Kit

LSK02



Depth Gauge



DG00

Torque Wrench



TW00

Titanium Square Bowl



TSB01

## Instruments [Purchased separately](#)

Gingiva Gauge



GG00

Torque Wrench Slot Adapter



TWSLA00

Torque Wrench Ball Abutment Adapter



TWBAA00

Torque Wrench Mount Adapter Extra Short



TWMA00ES

Torque Wrench 1.2 Hex Adapter Extra Short



TWHA00ES

Handpiece 1.2 Hex Driver Extra Short



SHHS00ES

Handpiece Fixture Driver NP Extra Long



HFD00NEL

Handpiece Fixture Driver RP Extra Long



HFD00REL

Torque Wrench Fixture Adapter NP Extra Long



TWFA00NEL

Torque Wrench Fixture Adapter RP Extra Long

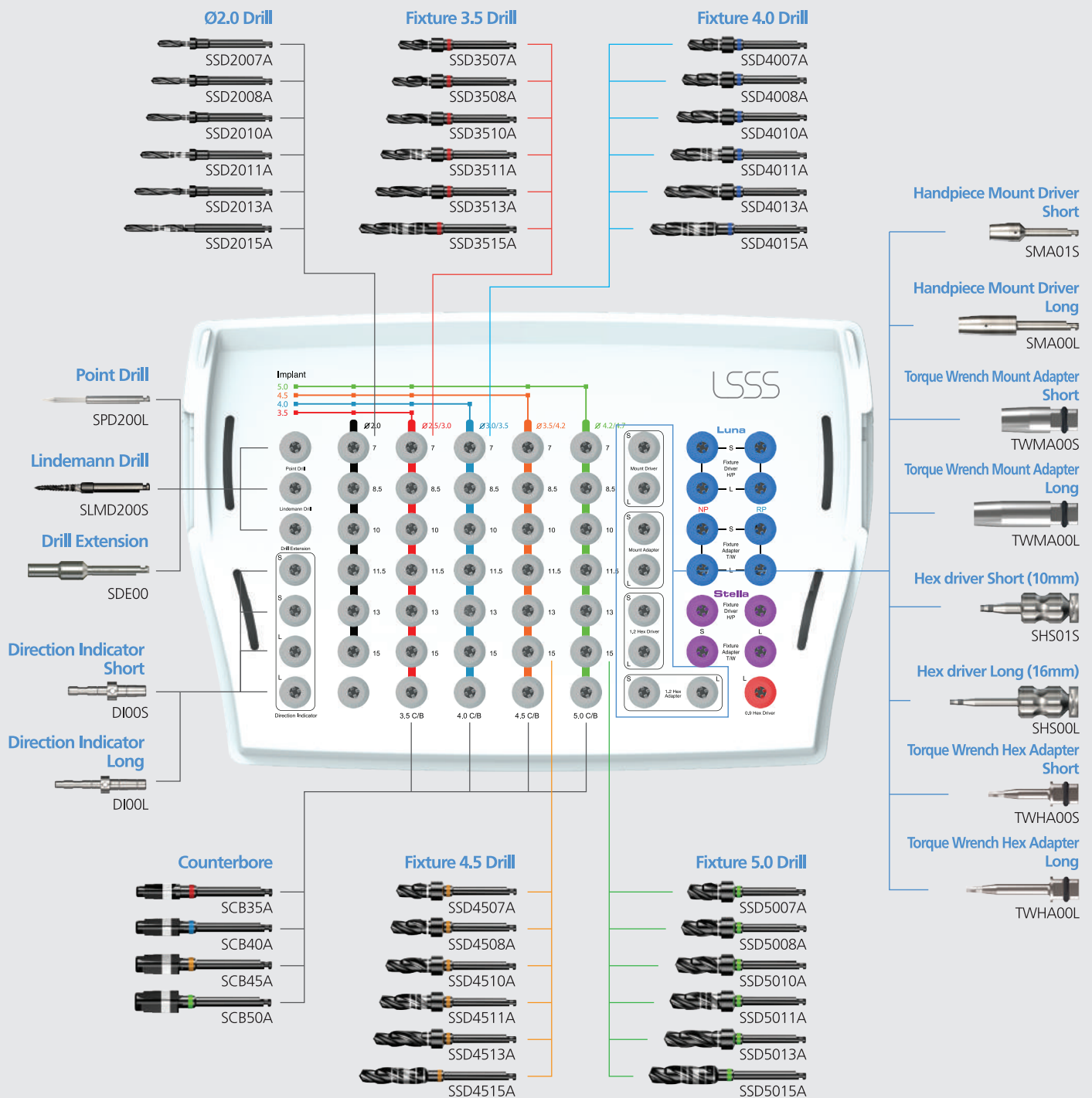


TWFA00REL



# LSSS Kit

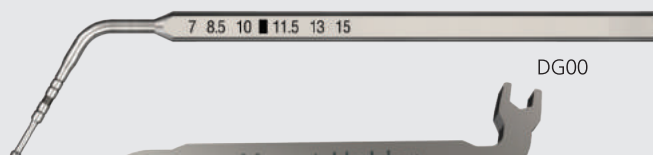
LSSSK01



S I M P L E  
E A S Y  
B E T T E R

Luna 

Depth Gauge



DG00

Mount Holder



SMH01

Torque Wrench



TW00

Titanium Square Bowl



TSB01

## Instruments Purchased separately

Handpiece Fixture Driver NP Short



HFD00NS

Handpiece Fixture Driver NP Long



HFD00NL

Handpiece Fixture Driver RP Short



HFD00RS

Handpiece Fixture Driver RP Long



HFD00RL

Torque Wrench Fixture Adapter NP Short



TWFA00NS

Torque Wrench Fixture Adapter NP Long



TWFA00NL

Torque Wrench Fixture Adapter RP Short



TWFA00RS

Torque Wrench Fixture Adapter RP Long



TWFA00RL

Gingiva Gauge



GG00

Torque Wrench Slot Adapter



TWSLA00

Torque Wrench Ball Abutment Adapter



TWBAA00

Torque Wrench Mount Adapter Extra Short



TWMA00ES

Torque Wrench 1.2 Hex Adapter Extra Short



TWHA00ES

Handpiece 1.2 Hex Driver Extra Short



SHHS00ES

Handpiece Fixture Driver NP Extra Long



HFD00NEL

Handpiece Fixture Driver RP Extra Long



HFD00REL

Torque Wrench Fixture Adapter NP Extra Long



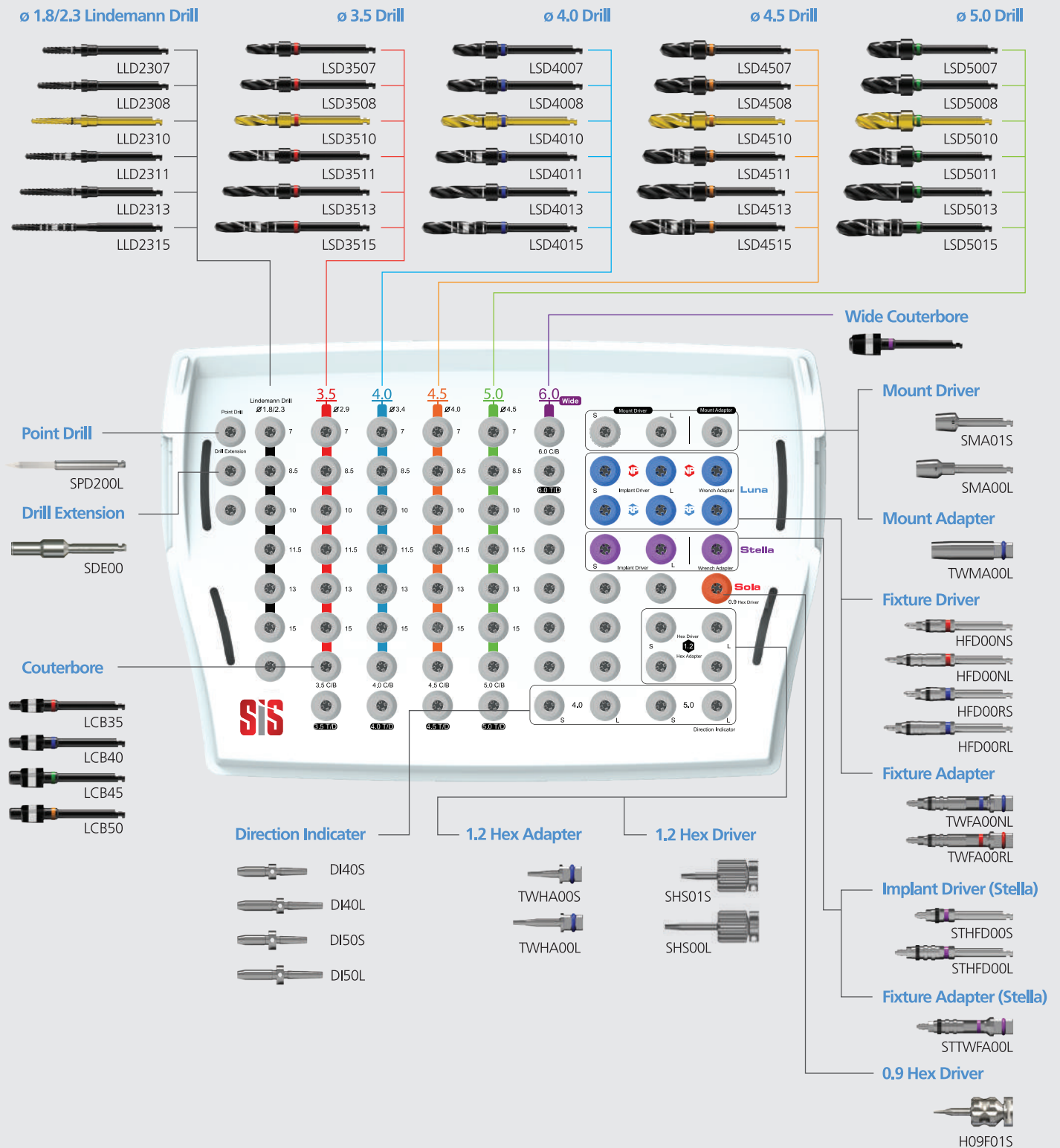
TWFA00NEL

Torque Wrench Fixture Adapter RP Extra Long

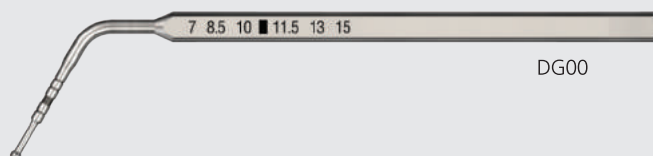


TWFA00REL

# SISK



Depth Gauge



DG00

Torque Wrench



TW00

Titanium Square Bowl



TSB01

## Instruments [Purchased separately](#)

Mount Holder



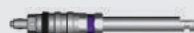
0.9 Hex Driver



Handpiece Fixture Driver Short (Stella)



Handpiece Fixture Driver Long (Stella)



Torque Wrench Fixture Adapter Long (Stella)

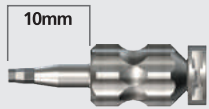


# Prosthetic Kit

SLPK01

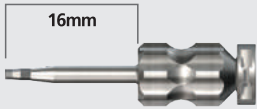


Hex Driver Short (10mm)



SHS01S

Hex Driver Long (16mm)



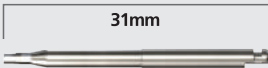
SHS00L

Handpiece Hex Driver Short



SHHS00S

Handpiece Hex Driver Long



SHHS00L

Torque Wrench Hex Adapter Short



TWHA00S

Torque Wrench Hex Adapter Long



TWHA00L

Handpiece Screw Abutment Driver Short



SMA01S

Torque Wrench Screw Abutment Adapter Short



TWMA00S

Torque Wrench










TW00



# Drill Sequence

● : Optional

		Ø 2.0 Drill	F3.5 Drill	F4 Drill	F4.5 Drill	F5 Drill	Counterbore 1 STEP	Counterbore 2 STEP
Fixture	Bone Quality							
3.5	SOFT	●						
	MEDIUM	●	●				●	
	DENSE	●	●					●
4.0	SOFT	●	●				●	
	MEDIUM	●	●	●			●	
	DENSE	●	●	●				●
4.5	SOFT	●	●	●			●	
	MEDIUM	●	●		●		●	
	DENSE	●	●		●			●
5.0	SOFT	●	●		●		●	
	MEDIUM	●	●		●	●	●	
	DENSE	●	●		●	●		●

# Surgical Kit

## SISK



### Point Drill

#### Ø1.8/2.3 Lindemann drill

Linderman Drill Ø2.3×7mm  
Linderman Drill Ø2.3×8.5mm  
Linderman Drill Ø2.3×10mm  
Linderman Drill Ø2.3×11.5mm  
Linderman Drill Ø2.3×13mm  
Linderman Drill Ø2.3×15mm

#### Fixture Ø3.5 Drill

Stopper Drill Ø3.5×7mm  
Stopper Drill Ø3.5×8.5mm  
Stopper Drill Ø3.5×10mm  
Stopper Drill Ø3.5×11.5mm  
Stopper Drill Ø3.5×13mm  
Stopper Drill Ø3.5×15mm

#### Fixture Ø4.0 Drill

Stopper Drill Ø4.0×7mm  
Stopper Drill Ø4.0×8.5mm  
Stopper Drill Ø4.0×10mm  
Stopper Drill Ø4.0×11.5mm  
Stopper Drill Ø4.0×13mm  
Stopper Drill Ø4.0×15mm

#### Fixture Ø4.5 Drill

Stopper Drill Ø4.5×7mm  
Stopper Drill Ø4.5×8.5mm  
Stopper Drill Ø4.5×10mm  
Stopper Drill Ø4.5×11.5mm  
Stopper Drill Ø4.5×13mm  
Stopper Drill Ø4.5×15mm

#### Fixture Ø5.0 Drill

Stopper Drill Ø5.0×7mm  
Stopper Drill Ø5.0×8.5mm  
Stopper Drill Ø5.0×10mm  
Stopper Drill Ø5.0×11.5mm  
Stopper Drill Ø5.0×13mm  
Stopper Drill Ø5.0×15mm

Counterbore Ø3.5

Counterbore Ø4.0

Counterbore Ø4.5

Counterbore Ø5.0

Counterbore Ø6.0

Handpiece Mount Driver Short

Handpiece Mount Driver Long

Torque Wrench Mount Adapter Long

Handpiece Fixture Driver NP Short

Handpiece Fixture Driver NP Long

Handpiece Fixture Driver RP Short

Handpiece Fixture Driver RP Long

Torque Wrench Fixture Adapter NP Long

Torque Wrench Fixture Adapter RP Long

Direction Indicator Short Ø4.0

Direction Indicator Long Ø4.0

Direction Indicator Short Ø5.0

Direction Indicator Long Ø5.0

Torque Wrench 1.2 Hex Adapter Short

Torque Wrench 1.2 Hex Adapter Long

1.2 Hex Driver Short (10mm)

1.2 Hex Driver Long (16mm)

Drill Extension

Depth Gauge

Torque Wrench

Titanium Square Bowl

### OPTION

Mount Holder

0.9 Hex Driver

Handpiece Fixture Driver Short (Stella)

Handpiece Fixture Driver Long (Stella)

Torque Wrench Fixture Adapter Long (Stella)

## LSSSK01



### Point Drill

#### Lindemann Drill

#### Ø2.0 Drill

Straight Stopper Drill Ø2.0×7mm  
Straight Stopper Drill Ø2.0×8.5mm  
Straight Stopper Drill Ø2.0×10mm  
Straight Stopper Drill Ø2.0×11.5mm  
Straight Stopper Drill Ø2.0×13mm  
Straight Drill Ø2.0×15mm

#### Fixture 3.5 Drill

Straight Stopper Drill Ø2.6×7mm  
Straight Stopper Drill Ø2.6×8.5mm  
Step Stopper Drill Ø2.5/3.0×10mm  
Step Stopper Drill Ø2.5/3.0×11.5mm  
Step Stopper Drill Ø2.5/3.0×13mm  
Step Drill Ø2.5/3.0×15mm

#### Fixture 4.0 Drill

Straight Stopper Drill Ø3.2×7mm  
Straight Stopper Drill Ø3.2×8.5mm  
Step Stopper Drill Ø3.0/3.5×10mm  
Step Stopper Drill Ø3.0/3.5×11.5mm  
Step Stopper Drill Ø3.0/3.5×13mm  
Step Drill Ø3.0/3.5×15mm

#### Fixture 4.5 Drill

Straight Stopper Drill Ø3.8×7mm  
Straight Stopper Drill Ø3.8×8.5mm  
Step Stopper Drill Ø3.5/4.2×10mm  
Step Stopper Drill Ø3.5/4.2×11.5mm  
Step Stopper Drill Ø3.5/4.2×13mm  
Step Drill Ø3.5/4.2×15mm

#### Fixture 5.0 Drill

Straight Stopper Drill Ø4.3×7mm  
Straight Stopper Drill Ø4.3×8.5mm  
Step Stopper Drill Ø4.2/4.7×10mm  
Step Stopper Drill Ø4.2/4.7×11.5mm  
Step Stopper Drill Ø4.2/4.7×13mm  
Step Drill Ø4.2/4.7×15mm

Counterbore Fix. Ø3.5

Counterbore Fix. Ø4.0

Counterbore Fix. Ø4.5

Counterbore Fix. Ø5.0

Direction Indicator Short × 2

Direction Indicator Long × 2

Handpiece Mount Driver Short

Handpiece Mount Driver Long

Torque Wrench Mount Adapter Short

Torque Wrench Mount Adapter Long

Hex driver Short (10mm)

Hex driver Long (16mm)

Torque Wrench Hex Adapter Short

Torque Wrench Hex Adapter Long

Drill Extension

Depth Gauge

Torque Wrench

Titanium Square Bowl

Mount Holder

### OPTION

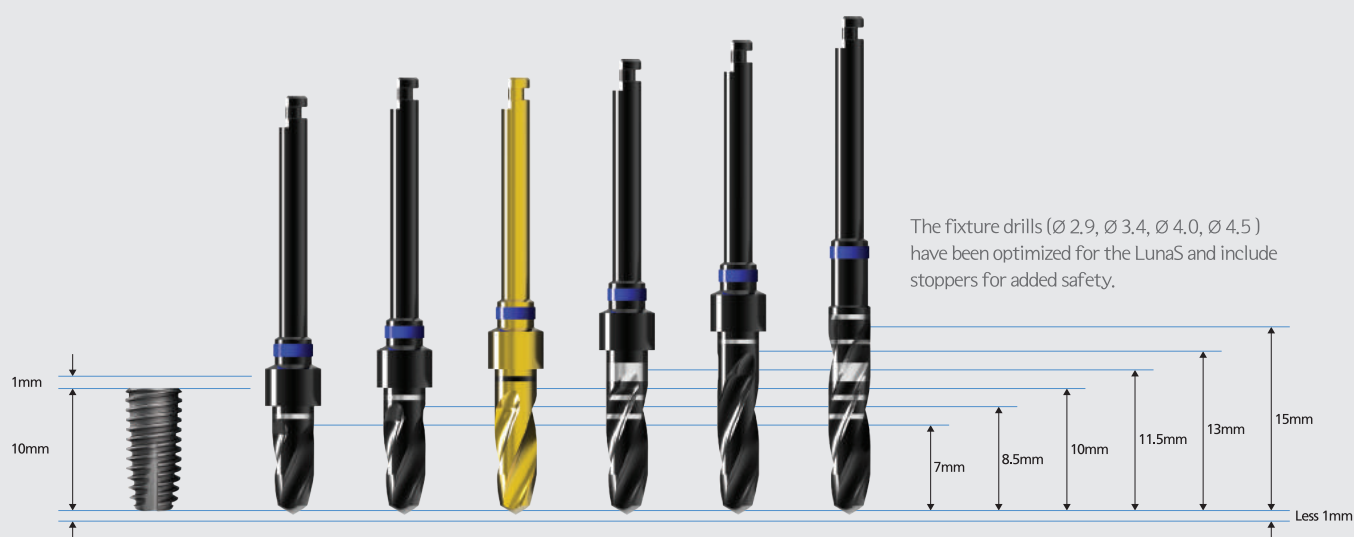
Torque Wrench Fixture Adapter Short

Torque Wrench Fixture Adapter Long

Handpiece Fixture Driver Short

Handpiece Fixture Driver Long

# SISK Drill Guide



All stopper drills have a marking 1mm away from the stopper.

Frequently used 10mm drill has an added yellow Tin coating.

The 11.5mm drill can be used for procedures of all shorter fixtures, with markings at 7mm, 8.5mm, 10mm, and 11.5mm.

The stopperless 15mm drill has additional markings at 13mm and 15mm and can be used for surgical procedures with all implant lengths.

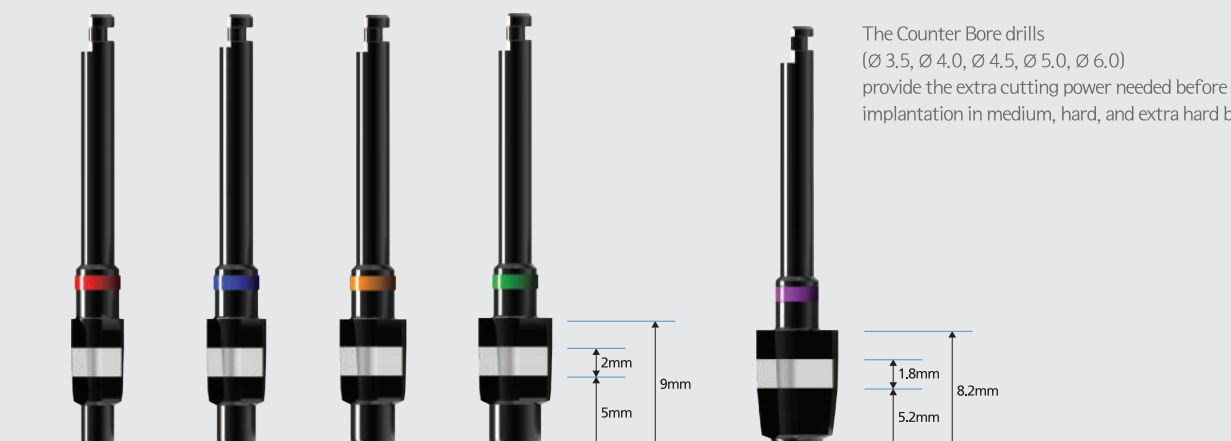
Ø3.5

Ø4.0










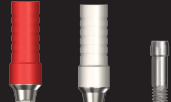










Ø4.5

Ø5.0

Ø6.0



# Restoration Guide

Cement-Retained		Single	Multiple	Overdenture
Simple Abutment				
Duo Abutment				
Contour Abutment				
Goldcast Abutment				
Angled Abutment				
Screw-Retained		Single	Multiple	Overdenture
Goldcast Abutment				
Screw Abutment				
Ball-Retained		Single	Multiple	Overdenture
Ball Abutment	